

My Objections as a Responsible Authority

Public safety

Due to the close proximity of the river Exe, this site raises a number of public safety concerns that have not been fully addressed with the information that has been provided with this TEN and the subsequent Risk Assessment. I am not satisfied that the event can be managed safely and I have some major concerns with regards to the mix of people, alcohol and a fast flowing river.

Appendix 1 shows the site and the location of the river Exe. The site is outlined in red. The River Exe runs along the entire Western edge of the site. Toward the bottom of the site is Bolham weir. The UK rivers guide book gives a description of Bolham Weir as:

The first weir is at Bolham and deserves to be treated with caution as at least one canoeist has died on it to my knowledge. It consists of a wide sloping ramp followed by a wide pool and a second broken section which looks like a short rapid. The ramp is perhaps best run on the extreme right at most levels; an almost river wide stopper forms below the rest of the ramp so leaders should inspect this weir before deciding where/ whether beginners should run it. **At high levels this stopper becomes extremely dangerous**, and even at moderate levels beginners can get severely stuck in it (it holds swimmers and flushes them towards river left).

A major concern is the attraction of the river for anyone under the influence of any alcohol or drugs or any other New Psychoactive Substances (NPS).

It would appear that this TEN is for the Event currently being advertised as the Hodgepodge Weekender 2016. The event details that:

'We'll still be providing a banging variety of ciders, and we'll get that moonshine to the new venue somehow'.

The event's Risk Assessment has looked at the impact of the river and it details

1. Heras fencing
2. 24 hour lighting
3. Lifeguard
4. Emergency service access routes
5. Appropriate sign-age

However, no further information is included or expanded upon. 24 hours lighting could prove a nuisance via light pollution and from generator noise to nearby residential dwellings.

Public Nuisance

Due to the quietness of the surrounding area and the close proximity of residential properties to the sites location, I feel that an outdoor music event with the sale alcohol and late night refreshments until 2am on Friday, 4am Saturday will result in public nuisance by the emitting of intrusive noise affecting nearby residential properties.

Appendix 2 is a plan showing 14 residential properties within 500m from the site (the red circle around the site is a 500m indicator from the centre of the site).

The site sits in the bottom of the Exe valley. All of the 14 properties are of a higher elevation than the site and due to the topography of the site the sound from any music on the will travel outwards towards all these properties. There are very few nature barriers present of the site to mitigate against the music noise.

The band 'Popes of Chillitown' describe themselves as

'a Ska/Dub/Punk band from London, who have been rampaging through the UK scene for the last few years like an unstoppable grooving, skanking juggernaut'.

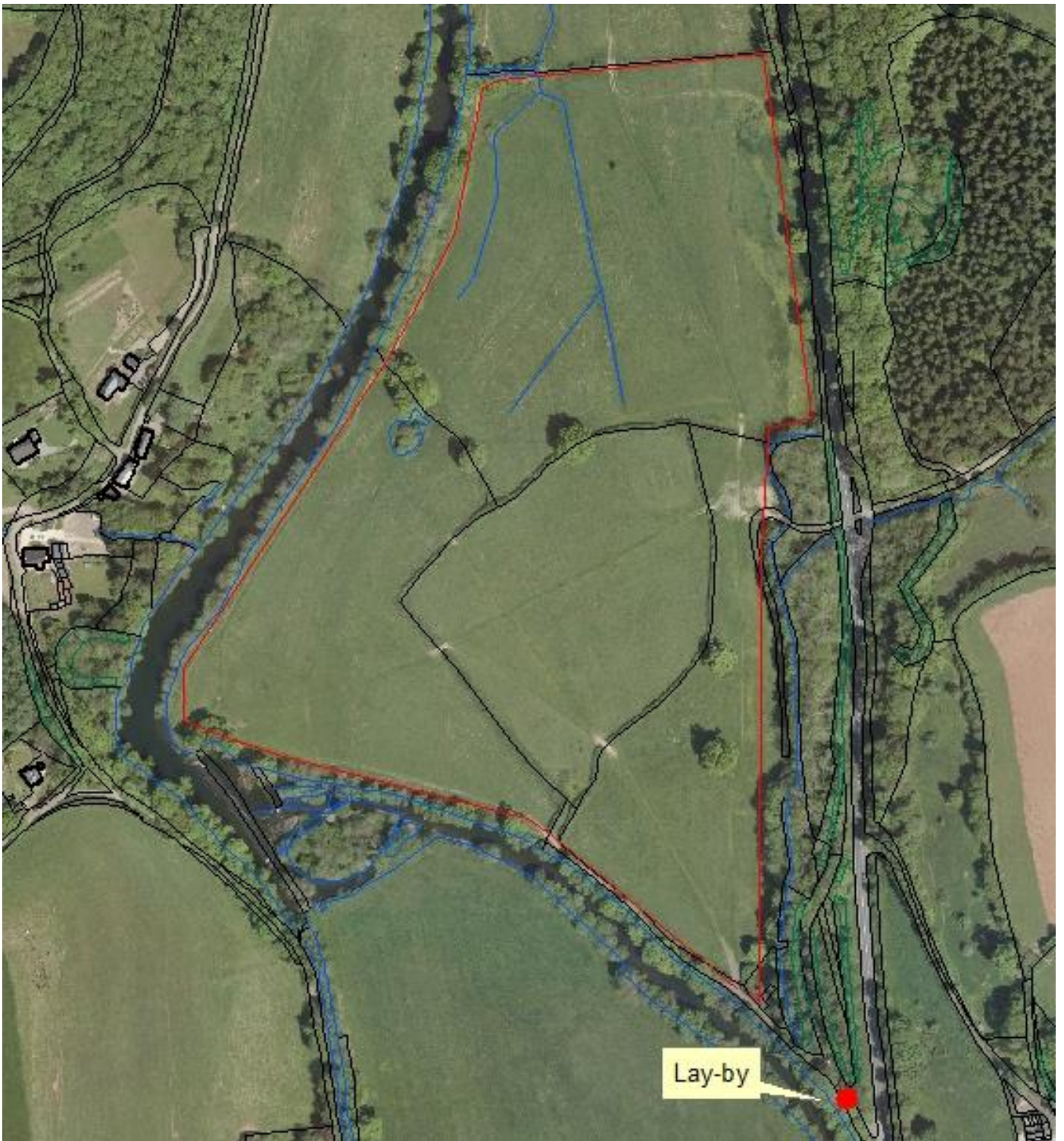
Appendix 3 shows the bands advertisement for a 'Tiverton Event'.

The Hodgepodge band listing for their event includes the Popes of Chillitown. This does seem to tie the two events together and indicate that our TEN is indeed for the Hodgepodge Weekender 2016.

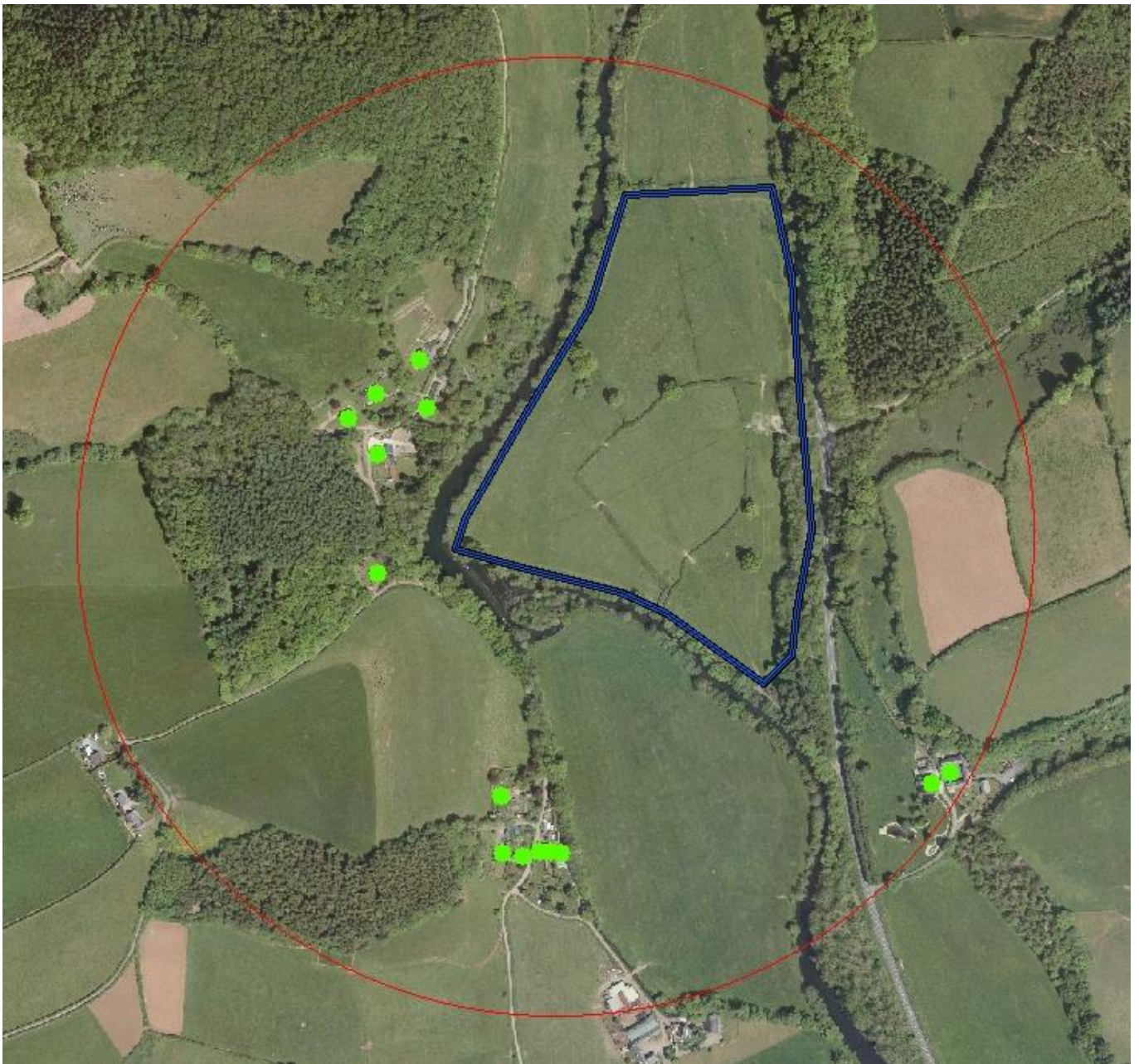
Appendix 4 details the bands listed for the Hodgepodge Weekender.

This does not appear to meet with the description given in the TEN – **A private Event with Camping.**

An outdoor music event with 3 music stages (a main electronic stage, main live stage and the shack) along with alcohol and late night refreshments until 2am on Friday, 4am Saturday will result in public nuisance by the emitting of intrusive noise affecting nearby residential properties.



Appendix 2



Appendix 3

http://www.bandsintown.com/event/12581381-popes

Bandsintown We Live For Live Music. [Fan Log In | Sign Up](#) [Signup as an Artist](#)



Camping la Citadelle ★★★★☆ £15 View Deals	Premier Inn Bangor Hotel ★★★★☆ £71 View Deals
--	--

SUN SEPTEMBER 4, 2016 - 12:00 PM

Popes of Chillitown ✓

Hodgepodge Weekender
Tiverton, United Kingdom

[Interested](#) [I'm Going](#) [Get Tickets](#)

Appendix 4

- So as you may know we haven't produced our weekender for the last 2 years and we were unsure we ever would again. But, due to popular demand, we're back!

- This years plan is to start again in the same vein, build up from the ground and get back to business. Good tunes, good vibes, good drinks and good people.

- Sadly our original stomping ground 'The Crawley Inn' is no longer with us (Don't worry we'll still be providing a banging variety of ciders, and we'll get that moonshine to the new venue somehow ;). However we have found a beautiful bit of land giving us the perfect space to celebrate 6 years together.

- We'll be providing you with 3 new venues; The Mélange, The Salmaguni and The Haberdash. Each venue will have it's own theme in keeping with our usual ethos.

★★★ A SMORGASBORD OF SOUND ★★★

███ The Salmaguni ███ Main Electronic Stage

★★★ KROME & TIME ★★★
★★★ CULPRATE [Deliverance Set] ★★★
★★★ CEEPHAX ACID CREW ★★★
★★★ BEATWIFE ★★★
★★★ C3B ★★★
★★★ PANTS & SOCKS ★★★
★★★ GHOST ★★★
★★★ MDS ★★★
★★★ LEFT LUCA5 ★★★
★★★ 10 YEARS OF AMEN-TAL ★★★
Dr...Um / Earl Grey / Bass-hoven / Bio-kem
★★★ ANORAK ★★★
★★★ SPACEFACE [Old Skool Set] ★★★
★★★ COMMUNITY PAYBACK TAKEOVER ★★★
★★★ SCRUBBER FOX ★★★
★★★ RAPIDAX (LIVE) ★★★
★★★ BASS AVENJAH ★★★

★★★★ HODGEPODGE NO STARS ★★★★★ EVADE // THRACKH // BAGUL // HAMSTA // TEMPORE

███ The Mélange ███ Main / Live Stage Ska/Punk/Dub/Folk/Balkan/Krust

★★★ DESERT STORM ★★★
★★★ COUNTING COINS ★★★
★★★ POPES OF CHILLITOWN ★★★
★★★ THE CHALK OUTLINES ★★★
★★★ THE FIREPIT COLLECTIVE ★★★
★★★ FAT SANDWICH ★★★
★★★ BRACKET RECORDS [Live] ★★★
★★★ INNERPEACE RECORDS [Live] ★★★

███ The Shack ███ Steppas / Dub / Takeovers

★★★ AMENSTRUAL TAKEOVER ★★★
★★★ LEMTEK TAKEOVER ★★★
★★★ FRACTAL TAKEOVER ★★★
★★★ LOKI & I-LODICA ★★★
★★★ HOOKLINE & SINKER ★★★
★★★ DAN FRASER ★★★
★★★ DAJU ★★★
★★★ MICRORAVE ★★★

███ The Smorgasbar ███ Bar / Chill / Acoustic / Comedy.

- We'll be supplying a tasty range of ciders as per usual, proper nice local ales, premium larger beers, a range of spirits and mixer and a banging home made punch with a nice boozy kick. Also for you early morning drinkers some Bloody Mary's with all the trimmings will be knocked up!

- They'll be a loada comfy stuff, sofas, cushions ect. Tunes playing and a few acoustic sessions and shows.

- A range of hot drinks aswell - Tea's, Filter Coffee, Chai, Hot Chocolate ect. (Boozey options available)

TICKETS :